

Local Planning Council



of Ventura County

The United Voice for Early Care and Education

CHILD CARE NEEDS ASSESSMENT

December 2015



Ventura County Office of Education 5100 Adolfo Road, Camarillo, CA 93012
805.437.1510 • Fax: 805.437.1515

LETTER FROM CO-CHAIRS

The Local Planning Council (LPC) of Ventura County is the united voice for early care and education. The LPC members are committed to continued collaboration with the early care and education community to broaden the access, availability, and quality of programming for our youngest learners.

The 2015 LPC Needs Assessment is an important planning tool for understanding Ventura County's early care and education landscape, providing significant information for legislators, planners, providers and community organizations regarding the availability of quality care and child care subsidies along with the indication of unmet need. This snapshot of data is captured at an important time in Ventura County's development of a robust early care and education system, where much is changing and challenging.

Since the last needs assessment in 2010, Ventura County's early care and education system has been faced with serious threats. The economic recession led to fewer families accessing services.

The State and County are beginning to restore spaces. At the same time, significant investments in high-quality programming are being made through federal, state, and local quality initiatives. Research is mounting regarding the importance of quality early education and expanded learning opportunities. Children who receive high quality early care and education experiences are more likely to have more advanced language, academic and social skills. Along with benefiting children, high quality care supports the economic success of families in Ventura County.

Renewed investments in early learning combined with a heightened national awareness of early care and education needs has us hopeful for expanding opportunities in the near future.

Dr. Carola Matera and
Adria Taha-Resnick, Co-Chairs



Letter from Co-Chairs	2
Introduction	4
Demographic Trends	
Population	5
Ethnicity	6
Economic Trends	7
Cost of Living	8
Public Assistance	9
Special Populations	
Special Needs	10
Migrant	11
Abuse and Neglect	12
Child Care Delivery System	13
Subsidized Child Care in Ventura County	15
Child Care Supply	16
Child Care Demand	19
Child Care Cost	19
What is Quality?	20
Where is Quality?	21
Conclusions	22
Local Planning Council Membership	23





Vision and Mission

The Local Planning Council (LPC) is the united voice for early care and education in Ventura County and actively plans for access to quality child care based upon the needs of children and families.

Structure and Purpose

With a focus on high-quality programming, the Council is tasked with assessing local child care needs, developing a countywide strategic plan, setting priorities for use of state funds, and facilitating the temporary and voluntary transfer of funds between state-funded agencies. The LPC is funded by the California Department of Education and is currently operating with a 50% reduction in funding that went into effect in 2010. Members are appointed by the Ventura County Board of Supervisors and the Ventura County Superintendent of Schools.

Background

In 1991, Congress established federal Child Care and Development Block Grants (CCDBG) through which each state was allocated funds to assist low-income families in obtaining child care and development services. As a result, a plan was developed to ensure that California would have a local voice to establish priorities in the allocation of CCDBG funds in each community.

During this same year, California State Assembly Bill 2141 passed, establishing the creation of a LPC in every county. LPC's membership and responsibilities were revised in 1997 as mandated by Assembly Bill 1542.

State Mandates

The mandated work of Local Planning Councils is outlined in California Education Code 8499 - 8499.7:

- Complete a countywide Needs Assessment a minimum of every five (5) years
- Develop a Strategic Plan based on the findings of the Needs Assessment
- Foster partnerships designed to meet local child care needs
- Establish county priorities for child care funding
- Distribute Transitional Kindergarten funds for ECE professional development
- Administer AB 212 supporting retention and degree attainment in the ECE field
- Facilitate the voluntary, temporary transfer of contract funds to maximize fiscal resources and utilization of child development funding

The 2015 Ventura County Child Care Needs Assessment is the fourth assessment of child care needs in Ventura County published by the LPC. **The overall purpose of this needs assessment is to re-assess child care needs in Ventura County and to identify new and continuing gaps in the child care delivery system.**

Key Trends

- 846,178 Ventura County residents
- 5.8 % of the population in 2014 was under 5 years of age
- 12.3 % of the population in 2014 was between 5-14 years of age.

Source: U.S. Census Bureau, American Community Survey, 2014

Ventura County Population

City	2010	2014*
Camarillo	65,201	66,923
Fillmore	15,002	15,420
Moorpark	34,421	35,550
Ojai	7,461	7,627
Oxnard	197,899	205,437
Port Hueneme	21,723	22,139
Santa Paula	29,321	30,441
Simi Valley	124,237	126,871
Thousand Oaks	126,683	129,342
Ventura	106,433	109,484
Unincorporated County	94,937	96,944
Total	823,318	846,178

Sources: U.S. Census Bureau, 2010; *U.S. Census Bureau, American Community Survey, 2014

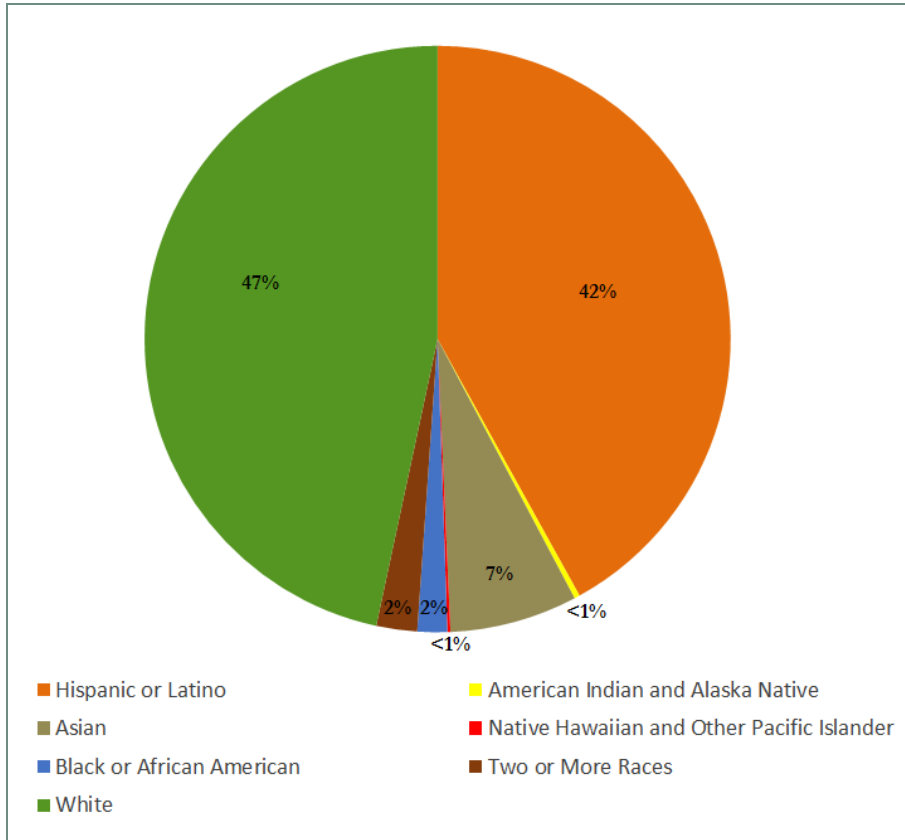


City	Under 5	Ages 5-9	Ages 10-14	Ages 0-14
Camarillo	3,994	4,060	4,518	12,571
Fillmore	1,538	1,689	1,206	4,432
Moorpark	2,117	2,429	2,915	7,462
Ojai	323	541	451	1,315
Oxnard	17,163	15,966	14,369	47,499
Port Hueneme	1,613	1,482	1,395	4,491
Santa Paula	2,612	2,464	2,642	7,719
Simi Valley	7,488	8,237	8,986	24,711
Thousand Oaks	5,731	9,170	9,170	24,070
Ventura	6,883	6,130	6,668	19,682
Total	49,464	52,168	52,320	153,952

Source: U.S. Census Bureau, American Community Survey, 2014

ETHNICITY

Ventura County Ethnicity



Key Trends

- California’s 0-5 population is ethnically and racially diverse; 52% are Latino, 27% are White, 11% are Asian American, 6% are African American, and 4% are from other ethnicities *
- In Ventura County:
 - The percentage of Latino residents increased from 33.4% in 2000 to 42% representing 355,251 residents **
 - 44.3% of the households report speaking a language other than English at home ***
 - Latino 3 and 4 year-olds are the least likely among the racial/ethnic groups to attend preschool *

Sources: *Children Now 2014; **US Census Bureau, American FactFinder 2015; ***American FactFinder 5-Year Estimates 2009-2013

Population by City and by Ethnicity

	Asian-American	African-American	Hispanic or Latino	Native American	Native Hawaiian	White	Other	Multi-Racial
Camarillo	10.1%	1.9%	25.4%	0.1%	0.2%	59.5%	0.1%	2.7%
Fillmore	0.6%	0.1%	76.7%	0.3%	0.2%	21.6%	0.1%	0.4%
Moorpark	6.5%	0.7%	31.7%	0.2%	0.0%	58.9%	0.1%	1.9%
Ojai	1.2%	0.1%	19.0%	0.0%	0.0%	77.2%	0.2%	2.3%
Oxnard	7.2%	2.7%	73.5%	0.3%	0.1%	14.8%	0.1%	1.3%
Port Hueneme	5.1%	4.5%	52.6%	0.6%	0.8%	33.0%	0.1%	3.3%
Santa Paula	1.6%	0.1%	77.5%	0.2%	0.1%	19.8%	0.1%	0.6%
Simi Valley	9.1%	1.2%	24.0%	0.2%	0.2%	61.6%	0.2%	3.5%
Thousand Oaks	9.5%	1.0%	18.1%	0.1%	0.1%	68.5%	0.1%	2.6%
Ventura	3.4%	1.5%	32.2%	0.3%	0.2%	59.8%	0.4%	2.2%

Source: US Census Bureau, American Community Survey, 2013

Key Trends

- 7.4% unemployment rate in California as of June 2014
- 6.2% unemployment rate in Ventura County as of June 2014
- 11% of Ventura County residents live in poverty*
- 18% of children 0-5 live in poverty*
- Economic difficulties across all spectrums of the population - high unemployment rates, decreased household incomes - coupled with the high cost of living in Ventura County have negatively impacted the ability of families to access high-quality child care



Sources: State of California Employment Development Department, 2014; *Resource & Referral Network, 2015

2013-14 Earnings and Employment

	Median Earnings Per Household*	Unemployment Rate	Below Poverty Level
Camarillo	\$89,641	4.4%	6.5%
Fillmore	\$55,776	8.7%	N/A
Moorpark	\$97,815	5.8%	7.1%
Ojai	\$60,157	7.2%	N/A
Oxnard	\$60,693	8.6%	16.5%
Port Hueneme	\$53,284	7.3%	20.9%
Santa Paula	\$54,068	10.5%	16.7%
Simi Valley	\$84,673	5.1%	6.7%
Thousand Oaks	\$101,417	4.8%	6.7%
Ventura	\$67,514	5.6%	10.3%

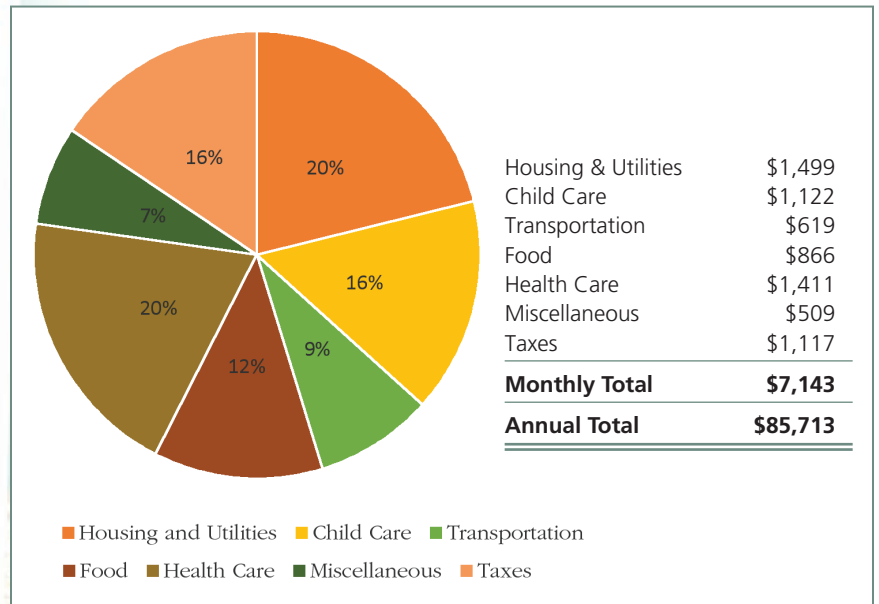
Sources: County of Ventura Human Services Agency 2013-2014 Annual Report; *www.citydata.com, 2015

Key Trends

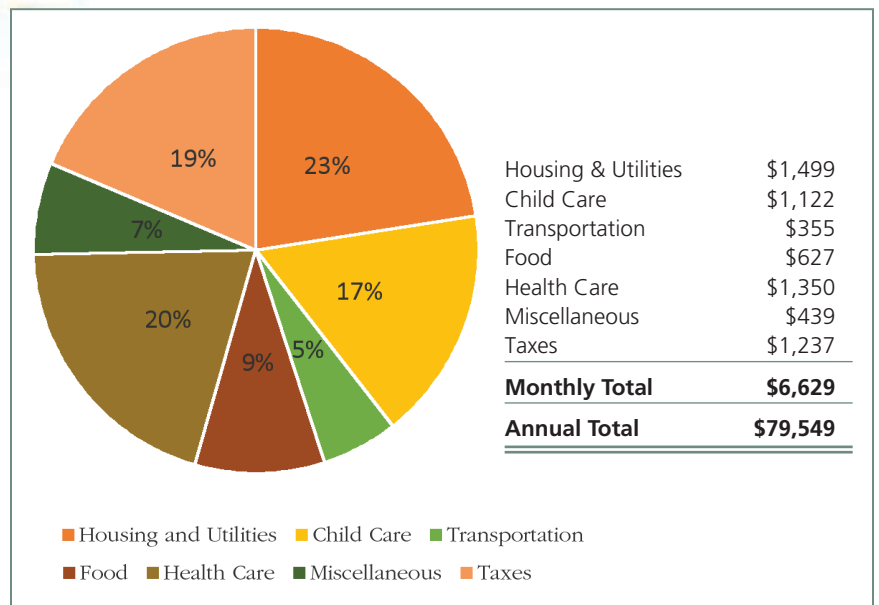
- A family of four in Ventura County with two children and two working adults needs an annual income of \$85,713 or \$7,143 per month for a modest standard of living
- A single parent family with two children in Ventura County needs an annual income of \$79,549 or \$6,629 per month for a modest standard of living

Source: California Budget Project, *Making Ends Meet*; 2013

Monthly Cost of Living Two Working-Parent Family of 4



Monthly Cost of Living Single Working-Parent Family of 3



Medi-Cal

Medi-Cal offers free or low-cost health coverage for California residents who meet eligibility requirements

- 204,833 individuals receive Medi-Cal with the expansion of the Affordable Care Act; this is an increase of 72% from June 2013 (119,279)

WIC

Women, Infants and Children (WIC) services consist of nutrition education, referrals to health care and other helpful services, breastfeeding promotion and support, and vouchers for healthy foods

- Medi-Cal recipients are automatically income eligible for WIC
- In Ventura County, to qualify for WIC services, a family must earn less than 185% of the federal poverty level
- 65% of WIC services are provided to children age 2 and under
- 33.9% of current participants also participate in CalFresh (food stamps)



WIC Numbers by Ages 0-5

WIC Office Locations	0	1	2	3	4	5	Total
Downtown Oxnard	644	480	446	468	438	47	5,465
Fillmore	207	160	164	153	152	15	1,136
North Oxnard	1,031	713	687	571	560	45	1,635
Santa Paula	411	308	318	299	275	24	1,608
Simi Valley	449	345	317	243	235	19	2,100
South Oxnard	1,381	1,005	1,009	1,021	961	88	3,607
Thousand Oaks	300	236	213	191	182	14	2,523
Ventura	632	442	358	347	295	26	851
Total	5,055	3,689	3,512	3,293	3,098	278	18,925
% County Total	27%	19%	19%	17%	16%	2%	

Source: US Census Bureau, American Community Survey, 2013

SPECIAL POPULATIONS

Special Needs

Children 0-36 Months

Children ages 0-36 months with developmental delays are served by the Ventura County Early Start Program, which is collaboratively administered by Tri-Counties Regional Center as the lead agency and Ventura County Special Education Local Plan Area (SELPA). Eligibility for Early Start includes a 33% delay in one or more areas of development, or conditions with an established or high risk for developmental delay or disability.

SELPA provides services for eligible children with “Solely Low Incidence” disabilities through regional infant and toddler programs: Deaf/Hard of Hearing, Visual Impairment, and Orthopedic Impairment.

The Regional Center serves all other eligible children, approximately 2,000, at any one time.

SELPA December 1, 2014

	Children Ages 0-5	Children Ages 6-17
Briggs Elementary	3	35
Conejo Valley Unified	199	1731
Fillmore Unified	47	416
Hueneme Elementary	171	751
Las Virgenes Unified	106	1120
Mesa Union Elementary	5	70
Moorpark Unified	86	766
Mupu Elementary	1	16
Oak Park Unified	28	334
Ocean View	40	203
Ojai Unified	24	390
Oxnard Elementary	397	1250
Oxnard Union High	1	1515
Pleasant Valley	173	760
Rio Elementary	74	358
Santa Clara Elementary	1	
Santa Paula Unified	77	574
Simi Valley Unified	311	1817
Somis Union	9	21
Ventura County Office of Education	130	585
Ventura Unified	225	1374
Total	2,108	14,086

Source: Ventura County Office of Education, SELPA; Tri-Counties Regional Center

Children 3-5 Years Old

Children 3-5 years old with special needs that meet criteria for special education eligibility under state and federal laws are provided special education services by local school districts and the Ventura County Office of Education.

Other Ventura County agencies serving children 0-5 years old:

- Tri-Counties Regional Center - Serves children who are over three years old and with medically diagnosed developmental disabilities
- Ventura County Behavioral Health - Serves Children with emotional and behavioral disabilities
- California Children Services - Serves children with health and medical disabilities
- Child Development Resources/Early Head Start and Head Start - Serves children with Head Start eligible disabilities enrolled in CDR Programs

Children 5 Years and Older

- Children 5 years and older are served through local school districts

Migrant

Migrant Child Care and Development Programs serve the children of agricultural workers while their parents are at work. An agricultural worker family has earned at least 50% of its total gross income from employment in fishing, agriculture or agriculturally-related work during the twelve-month period immediately preceding the date of application for child care and development services. Ventura County offers migrant families the following child care options:

Migrant Education Program (MEP)

- The Migrant Education Program (MEP) serves ages 3-21 in Ventura County
- During the 2014-2015 school year, MEP served 650 prekindergarten children in 11 school districts

California Migrant Child Care and Development Program (CMIG)

- California's Migrant Child Care and Development Program (CMIG) serves children of agricultural worker families while their parents work
- Eligible families receive public assistance; are income eligible; are homeless; and/or have a child at risk of abuse, neglect, exploitation or is receiving child protective services
- CMIG contracts with Child Development Inc. (CDI) to provide migrant child care services. In the 2014-15 fiscal year, CDI served 63 migrant preschool children at 3 child care centers

*CMIG numbers represent funded spaces only and do not include all migrant families who may be enrolled under other funding sources

Migrant & Seasonal Head Start (MSHS)

- Migrant & Seasonal Head Start (MSHS) in Ventura County is administered through the Community Action Partnership of San Luis Obispo, Inc. (CAPSLO)
- CAPSLO MSHS Programs provide services to children 0-5 years of age through its Federal Head Start grant
- During the 2014 -2015 school year, the MSHS Programs provided full-day child care services to 143 children in Ventura County

Source: Data provided by individual agency representatives



Abuse and Neglect

Key Trends

- From 2009-2012 there was a steady increase in the rate of child abuse and neglect reports
- From 2012 to 2013 there was a slight decline in cases reported
- In 2013, there were 52.3 child abuse and neglect reports per 1,000 children under 18 years in Ventura County
- 7.4 child abuse and neglect reports were substantiated per 1,000 children during this same time period
- Children 6-10 years (26.4% of cases) comprised the largest percentage of substantiated child abuse cases, followed by children ages 3-5 years (20.5% of cases), and then ages 11-15 years (19.3% of cases)



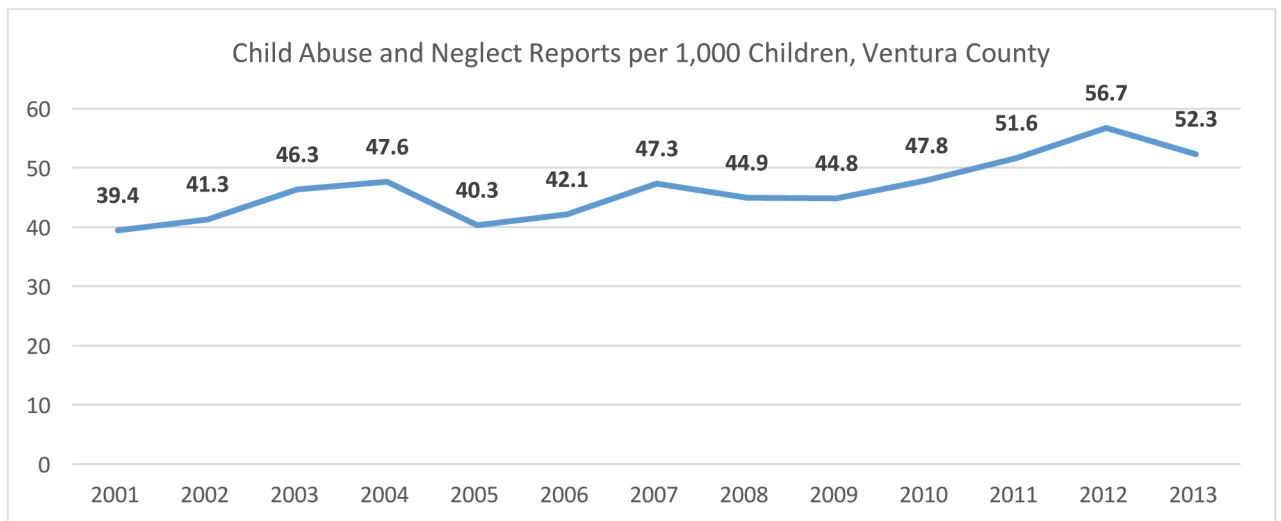
Children Who Are Abused, Neglected, or At-Risk of Abuse/Neglect

The state of California defines child abuse and neglect as non-accidental physical injury; sexual abuse or exploitation; willful cruelty or unjustifiable punishment; or neglect, including failure to provide adequate food, clothing, shelter, medical care, or supervision.

The Ventura County Human Services Agency - Children and Family Service (Child Protective Services) provides intervention services in cases of child abuse and neglect in Ventura County.

When a report of child maltreatment indicates the need for protection, Child Protective Services works to provide alternate placement; placement into foster care is one option.

Source: Ventura County Public Health *VC-Pact Trend Report*, 2015



Center-Based & Family Child Care

When choosing child care, parents have a choice; they can choose center-based or family child care. Child care centers must be licensed through the California Department of Social Services, Community Care Licensing Division and may obtain licenses for infant care, preschool care or school-age care. Similar to the center-based care, family child care is licensed through the State of California. A family child care home must be in the licensee's own home, and reflect a home-like environment. Small family child care homes serve up to 8 children and large family child care homes serve up to 14 children. Center-based and family child care homes can be license-exempted as long as they abide by specific regulations.

Non-Subsidized & Subsidized Child Care

Non-subsidized spaces are utilized by *private pay families* in child care centers and family child care homes, and are operated by community based organizations, churches, individuals, non-profits and for-profits.

Subsidized spaces may be available for families needing assistance in paying for child care. Family eligibility is based on a variety of needs determined by state and federal regulations. Eligible families are low income and also working, seeking employment, enrolled in education or job training programs, homeless or medically incapacitated or referred by Child Protective Services.

Alternative Payment Program (APP or AP Programs)

Funded by the State of California, these programs subsidize the child care costs for eligible families. Parents may choose from family child care homes, child care centers, or license-exempt care providers. Children are eligible for child care services until their 13th birthday.

After School Programs

The After School Education and Safety (ASES) Program is a state-funded program serving students at sixty-seven (67) elementary and middle schools throughout Ventura County. The program is designed to improve academic achievement and activities align with school curricula. It is the intent of ASES Program legislation to encourage schools and school districts to provide safe and educationally enriching alternatives for children and youth during non-school hours. After-school and before-school services are provided at no cost to participating families. The 21st Century Community Learning Centers are funded by five-year federal grants.





Head Start

The U.S. Department of Health and Human Services funds Head Start. Child Development Resources of Ventura County, Inc. is the Head Start grantee for Ventura County. Head Start eligibility is among the most stringent in Ventura County as it is based on the federal poverty level, which is \$24,250 per year for a family of four.

State-Funded Preschools

The California Department of Education funds state-funded preschools. Administered through local educational agencies, colleges, community-action agencies and private nonprofit agencies. State funded pre-kindergarten program use the state median income guidelines, which is \$46,896 per year for a family of four.

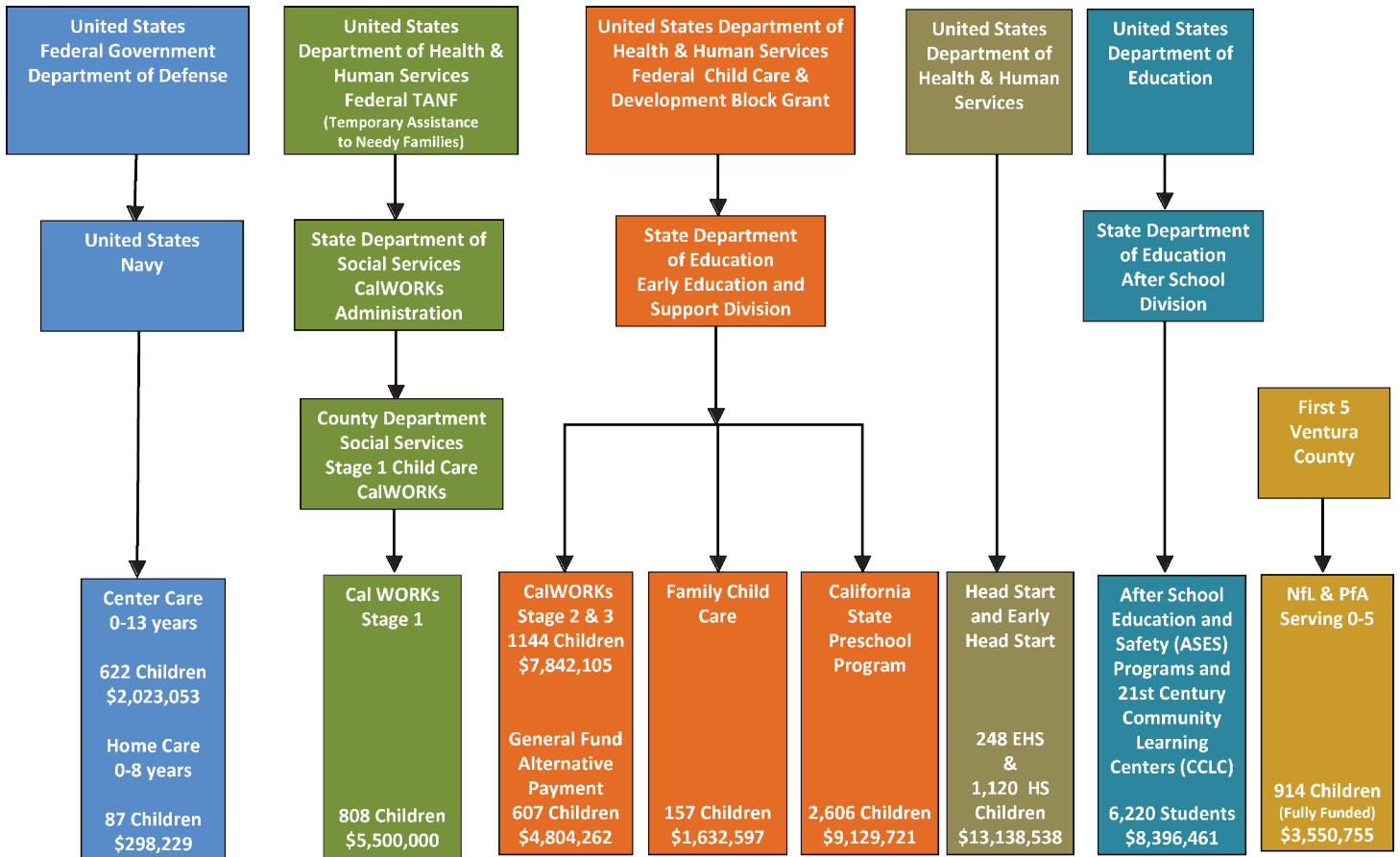
California Work Opportunities and Responsibility to Kids (CalWORKs) Child Care

CalWORKs provides temporary cash aid to families with children under the age of 19. Most adults are limited to receiving up to five years of cash aid over a lifetime. Unless exempt, CalWORKs participants are required to participate in welfare-to-work activities. For CalWORKs recipients participating in welfare-to-work activities that lead to employment and self-sufficiency, subsidized child care is available for their children up to age 12 and children with special needs and severe disabilities up to 18 years of age.

There are three stages of CalWORKs child care:

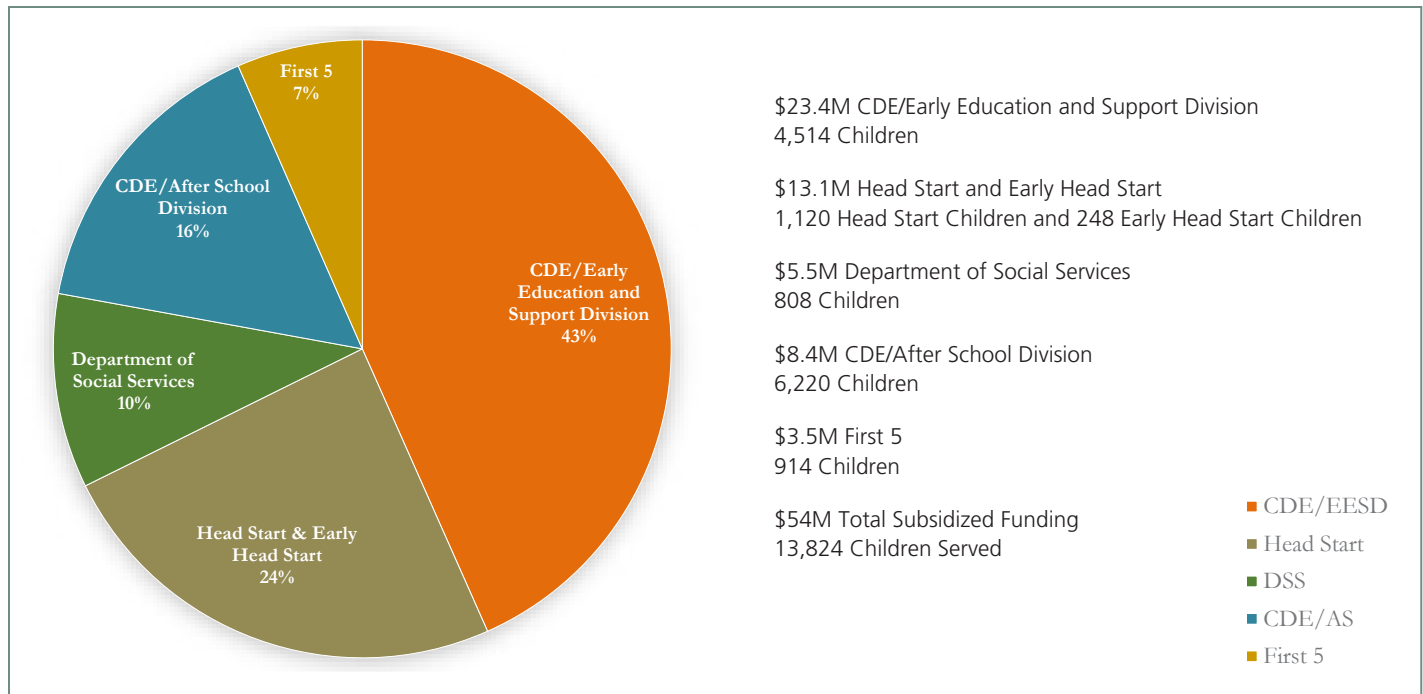
- **Stage 1 Child Care:** Stage 1 Child Care is funded by the California Department of Social Services and is locally administered by Child Development Resources through contracts with local Alternative Payment (AP) Program agencies. Stage 1 Child Care begins with a parent's entry into a County-approved welfare-to-work program or employment and continues serving them for up to six months or until their work and child care are stable.
- **Stage 2 Child Care:** CDE contracts with the local AP Program agencies Child Development Resources and Children's Home Society to administer Stage 2 Child Care, which is available to families on welfare and with stable employment. Families may receive Stage 2 Child Care for up to 24 months after they stop receiving cash aid. Parents may select from 1) licensed child care providers such as child care and development centers or family child care homes; or 2) license exempt child care providers such as family, friends, or neighbors.
- **Stage 3 Child Care:** CDE contracts with the local AP Program agencies to administer Stage 3 Child Care. Stage 3 supports families as they move off welfare and into self-sufficiency and have exhausted their up to 24 months of eligibility for Stage 2. Families can continue to receive Stage 3 Child Care until they no longer meet the income eligibility requirements or their children exceed the age limit. Parents may select from 1) licensed child care providers such as child care and development centers or family child care homes; or 2) license exempt child care providers such as family, friends, or neighbors.

Subsidized Child Care in Ventura County



Data Collected by LPC November 2015

Subsidized Child Care Spaces



Spaces in Child Care Centers

Zip Code	City	Compiled by Child Development Resources Inc.	Total Number of Centers	Total Center Spaces	Total Lic. Exempt Spaces	Total Lic. Spaces	Number Providing Infant Care	Infant Spaces	Infant Subsidized Spaces*	Lic. Preschool Age Spaces	Preschool Subsidized Spaces*	Lic. School Age Spaces	Total Spaces Center & Family Care	Total QRIS Spaces*
91320	Newbury Park	Total	20	1684	632	1052	1	152	0	820	32	80	1860	32
91360	Thousand Oaks		24	1700	446	1254	1	6	0	1168	106	80	1966	110
91361	Thousand Oaks		8	744	220	524	0	0	0	0	0	0	744	0
91362	Thousand Oaks		18	1389	302	986	4	77	0	986	64	24	1453	68
91377	Thousand Oaks	Total	50	3833	0	2764	5	83	0	2154	170	104	4163	178
93001	Oak Park	Total	3	240	180	60	0	0	0	60	0	0	256	0
93001	Ventura		15	1001	190	811	3	44	0	631	202	136	1167	459
93003	Ventura		25	1802	60	1742	6	144	8	1166	140	432	2278	89
93004	Ventura		10	825	52	773	2	35	8	573	191	165	1145	96
93010	Ventura	Total	50	3628	302	3326	11	223	16	2370	533	733	4590	644
93010	Camarillo		22	2219	608	1611	3	87	0	1212	21	312	2507	57
93012	Camarillo		3	158	0	158	0	0	0	60	0	98	284	0
93015	Camarillo	Total	25	2377	608	1769	3	87	0	1272	21	410	2791	57
93021	Fillmore	Total	6	369	100	269	1	30	16	193	207	46	493	130
93021	Moorpark	Total	12	960	220	740	2	35	0	493	160	212	1158	163
93022	Oak View		1	30	0	30	0	0	0	30	0	0	62	0
93023	Ojai		13	612	80	532	2	23	0	397	76	112	664	20
93023/22	Ojai / OV	Total	14	642	80	562	2	23	0	427	76	112	726	20
93030	Oxnard		24	2530	1420	1110	1	20	31	987	644	103	3308	672
93033	Oxnard		27	1706	440	1266	2	27	40	1199	1287	40	2708	1275
93035	Oxnard		3	220	190	30	0	0	0	30	71	0	780	90
93036	Oxnard		10	454	0	454	0	0	12	355	434	99	952	452
93040	Oxnard	Total	64	4910	2050	2860	3	47	83	2571	2436	242	7748	2489
93041	Port Hueneme	Total	4	197	54	143	0	0	0	96	154	47	467	88
93060	Santa Paula	Total	14	883	660	223	0	0	2	223	233	0	1161	235
93063	Simi Valley		21	2187	800	1387	3	36	0	1008	0	343	2587	17
93065	Simi Valley		22	1893	535	1358	3	60	0	854	80	444	2311	89
93066	Simi Valley	Total	43	4080	1335	2745	6	96	0	1862	80	787	4898	106
93066	Somis	Total	0	0	0	0	0	0	0	0	0	0	0	0
Grand Total			305	23803	6221	16513	34	776	117	12541	4102	2773	30325	4142

*Ventura County Office of Education, Early Childhood Programs, QRIS spaces as of November, 2015

Spaces in Family Child Care Homes

Zip Code	City	Compiled by Child Development Resources Inc.	Total Number of Sm & Lg Homes	Size of Facility***		Total Number of Spaces	Number Providing Infant Care**	Number Providing Evening Care	Number Providing Weekend Care	Total Spaces Center & Family Care	Total QRIS Spaces*
				Small	Large						
91320	Newbury Park	Total	19	15	4	176	17	1	1	1860	32
91360	Thousand Oaks		28	21	7	266	26	0	1	1966	110
91361	Thousand Oaks		0	0	0	0	0	0	0	744	0
91362	Thousand Oaks		8	8	0	64	8	1	1	1453	68
91377	Thousand Oaks	Total	36	29	7	330	34	1	2	4163	178
93001	Ventura	Oak Park Total	2	2	0	16	2	0	0	256	0
93003	Ventura		17	12	5	166	15	3	2	1167	459
93004	Ventura		49	35	14	476	48	9	2	2278	89
	Ventura		34	26	8	320	34	4	1	1145	96
	Ventura	Total	100	73	27	962	97	16	5	4590	644
93010	Camarillo		30	22	8	288	28	5	4	2507	57
93012	Camarillo		12	7	5	126	12	2	2	284	0
93015	Camarillo	Total	42	29	13	414	40	7	6	2791	57
93021	Fillmore	Total	14	12	2	124	14	2	2	493	130
93022	Moorpark	Total	21	16	5	198	21	1	1	1158	163
93023	Oak View		4	4	0	32	3	1	0	62	0
93023/22	Ojai		5	3	2	52	4	0	0	664	20
93030	Ojai / OV	Total	9	7	2	84	7	0	0	726	20
93033	Oxnard		80	57	23	778	75	28	11	3308	672
93035	Oxnard		102	71	31	1002	99	40	14	2708	1275
93036	Oxnard		56	35	20	560	54	17	4	780	90
	Oxnard		48	29	19	498	45	14	8	952	452
93040	Oxnard	Total	286	192	93	2838	198	99	37	7748	2489
93041	Piru	Total	1	0	1	14	1	0	0	14	0
93060	Port Hueneme	Total	27	18	9	270	26	14	4	467	88
93063	Santa Paula	Total	28	19	9	278	29	11	6	1161	235
93065	Simi Valley		41	29	12	400	29	4	0	2587	17
93066	Simi Valley		44	33	11	418	41	8	2	2311	89
	Simi Valley	Total	85	62	23	818	70	12	2	4898	106
	Somis	Total	0	0	0	0	0	0	0	0	0
	Grand Total		670	474	195	6522	556	164	66	30325	4142

*Ventura County Office of Education, Early Childhood Programs, QRIS spaces as of November, 2015
 ** Infant refers to a child zero to 24 months of age-A provider caring for infants may take two, three, or four infants depending on the ages and number of other children being cared for at the time.
 The number of family child care spaces is based on maximum licensed capacity, either 8 or 14-A provider may choose to care for less than their maximum capacity.
 ***Max infants for small FCC is 2; max infants for large FCC is 4 (totals reflect maximum infant spaces available)



Key Trends

- 32,037 total child care center and family child care spaces in 2010
- 30,325 total child care center and family child care spaces in August 2015
- 1,712 total spaces lost between 2010 and 2015
 - 1,874 family child care spaces lost
 - 162 center-based spaces gained
- 4,219* center-based spaces are subsidized or 14% of total center spaces

Reported by CDE subcontractors in Ventura County, does not include Alternative Payment placements

Child Care Centers

Year	Total Number of Centers	Total Spaces	Total Lic. Exempt Spaces	Total Lic. Spaces	Number Providing Infant Care	Infant Spaces	Lic. Preschool Age Spaces	Lic. School Age Spaces
October 1, 2010	303	23,641	7,313	16,328	26	628	11,784	3,916
August 1, 2015	305	23,803	6,221	16,513	34	776	12,541	2,773

Family Child Care Homes

Year	Total Number of Homes	Size of Facility		Total # of Spaces in FCC	Family Size with Infant Spaces	Number Providing Evening Care	Number Providing Weekend Care
		Small	Large				
October 1, 2010	923	687	236	8,396	704	245	294
August 1, 2015	670	474	195	6,522	556	164	66

Source: Child Development Resources, Inc.

Child Care Supply and Demand as of 2015

Supply

30,325 estimated child care supply:

- 23,803 child care center spaces
 - 4,997 subsidized center spaces
- 6,522 family child care spaces

Demand for 0-5 year old subsidized spaces

- 11,776 children in poverty
- 4,997 subsidized spaces available
- 6,779 gap
- 58% of 0-5 year olds in poverty not being served

Demand for 0-12 year old spaces

- 94,946 potential spaces needed (based on 67% with parents in the workforce)
- 30,325 available spaces
- 64,621 gap
- 68% of 0-12 year olds not being served



Sources: Child Development Resources, Inc.; California Child Care Resource & Referral Network

CHILD CARE COST

Type of Facility	Ventura County	California	National Average
Child Care Center			
Infant	\$14,544	\$13,327	\$4,822-\$17,062
Preschool	\$10,348	\$9,106	\$3,997-\$12,781
Family Child Care Home			
Infant	\$9,344	\$8,462	\$3,972-\$10,666
Preschool	\$8,799	\$7,850	\$3,675-\$10,030

As a basis of comparison, California (in-state) annual tuition and fees for public four-year college: \$9,172*

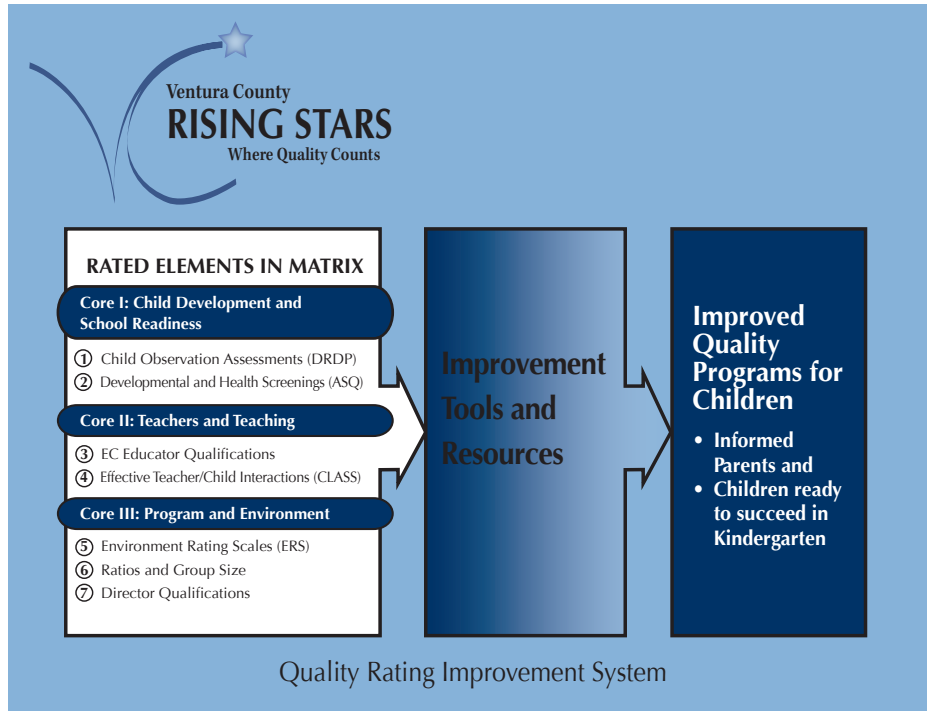
Sources: California Child Care Resource & Referral Network; *Child Care Aware of America, 2015

WHAT IS QUALITY?

Rising Stars Quality and Rating Improvement System is a 5-star rating system that makes it easy for parents to identify quality early learning programs. Participating programs are rated on a scale from 1 to 5 stars: the more stars, the better the quality. Rising Stars provides family child care homes and centers with additional training and support so that they can give children a high quality early education experience and earn a higher rating.

Participating sites include state and federal subsidized sites, family child care homes, private, and faith-based pre-schools serving children birth to age 5.

- 93 sites have Rising Stars ratings as of December 2015
- 87 (95%) of the sites were rated high; 3-5 stars



Number of Preschools Rated at Each Star Level

City	Total Number of Sites Rated	1 Star	2 Stars	3 Stars	4 Stars	5 Stars
Ventura County Total	93		6	24	48	15

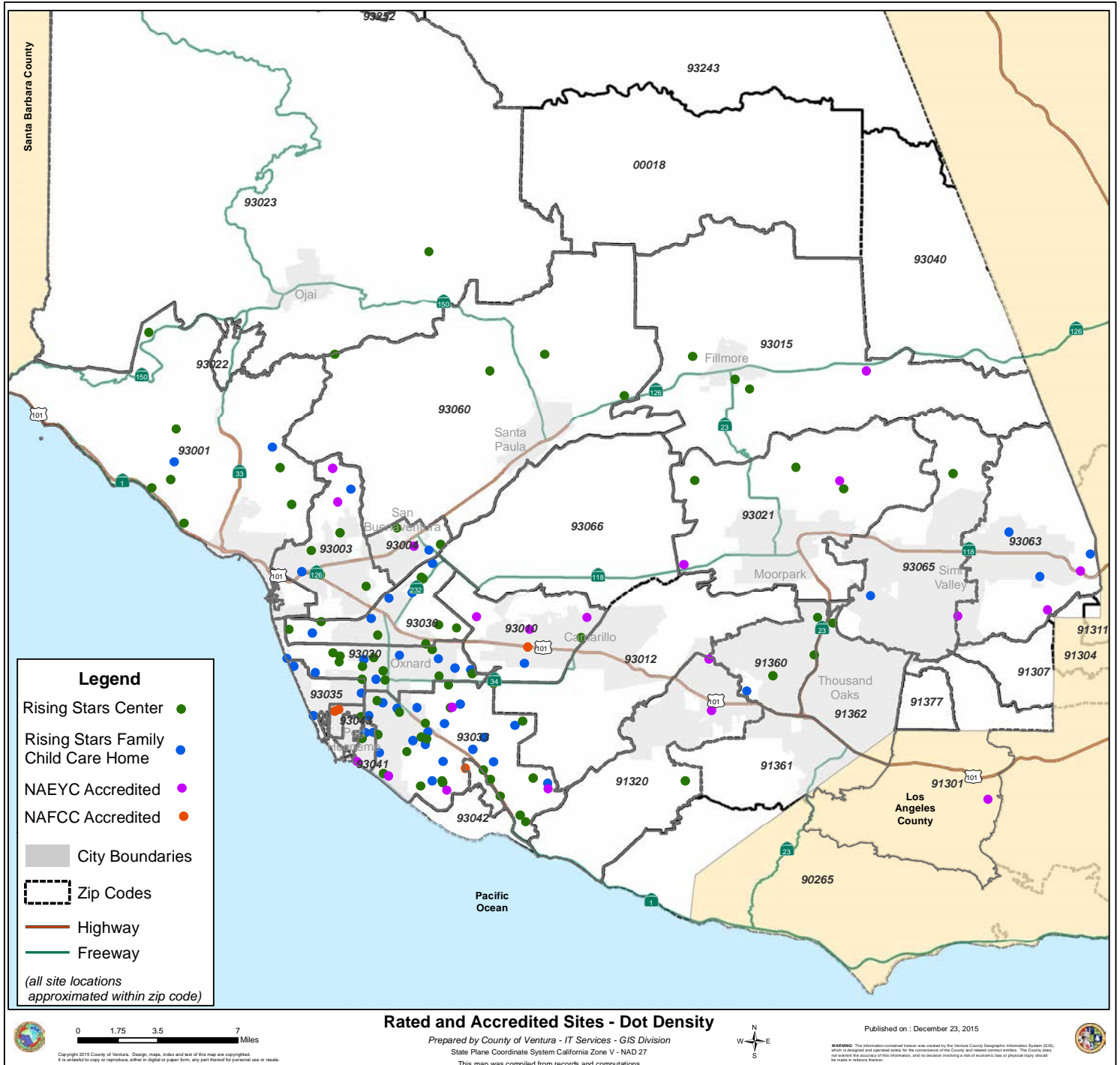


The National Association for the Education of Young Children (NAEYC) strives to promote the quality of education for all children from birth through age eight. Utilizing the accreditation system enables families to find high-quality programs for their children.

- 20 sites are NAEYC accredited

The National Association for Family Child Care (NAFCC) represents professional providers and promotes the only nationally-recognized accreditation for family child care. Accreditation is an indicator that family child care offers safe and nurturing care, complete with educational activities.

- 4 sites are NAFCC accredited



The Local Planning Council of Ventura County membership, appointed by the Board of Supervisors and County Superintendent, is committed to increasing the accessibility of quality programming for our youngest learners. The 2015 Child Care Needs Assessment makes clear the need to increase new spaces while also advocating for sustained and enhanced quality initiatives. This work needs to be accomplished within the county's changing demographic and economic context. While the Ventura County population has not increased since 2010, the Latino population has grown 4% (from 38% in 2010 to 42% in 2015), with 44% reporting speaking a language other than English. Also significant is the number of families living in poverty - 18% of our 0-5 year olds currently live in poverty.

Since the 2010 Needs Assessment, the recession resulted in state budget cuts of \$1 billion to the early learning system. Ventura County lost 4,000 subsidized spaces between 2012 and 2014. The number of center-based spaces remains unchanged since 2010 and the number of family child care homes has decreased by 27%. While spaces are gradually being restored, the demand for these programs continues to exceed supply. Currently, only 1 in 2 children living in poverty, has access to a subsidized child care space.

Affordable child care is an important economic driver, keeping Ventura County adults working. In 2015, a family of four needed an annual income of \$85,713/month for a modest standard of living with child care representing the second largest expense behind housing and utilities. The high cost of living in Ventura County coupled with income insecurity often impacts a family's ability to access high quality child care.

A growing body of research indicates that it is the quality of early learning experiences that most impacts children's long-term outcomes. Ventura County has participated in quality initiatives for over 15 years, most recently with federal and state support in implementing the Quality Rating and Improvement System. Sustaining this work and ensuring quality is available in all early learning/childcare settings is a priority for the Local Planning Council. Additionally, quality efforts must address the whole early childhood system, including health, parent education and engagement, and social emotional support. Quality will be achieved through a systematic, collaborative approach that includes the entire early learning community.

The 2016-21 Local Planning Council Strategic Planning Process will address the gaps and barriers identified in the Needs Assessment. Particular areas of focus will include advocating for increased funding to support spaces and establishing and maintaining high quality for all programming to ensure our children's success in school and life.

Methodology and Disclaimer

The 2015 Ventura County Child Care Needs Assessment is the result of a comprehensive demographic analysis using data from the United States Census, the United States Census American Community Survey, the California Department of Education, county and city reports, and other sources of data. The data represents a point in time. The most recent statistics were used in all instances; however, in some situations, more recent statistics, while preferable, were not available.

Printed January 2016

Member Name	Member's Organization Affiliation
Dawn Anderson	VCOE – Comprehensive Health & Prevention Programs
Nancy Ballard	Ventura County Public Health
Linda Bays	Ventura County Public Health
Joseph Castañeda-Carrera	El Centrito Family Learning Centers
Patricia Cervantes	Santa Clara Valley NfL
Rachel Champagne	Child Development Incorporated
Amy Cranston	VCOE – Expanded Learning
Jennifer Escamilla	CA Association for the Education of Young Children
Janet Fleming.	Child Development Resources – Early Head Start
Loretta Galaviz.	Ventura Unified School District
Laurie Jordan	Rainbow Connection
Kim Karkos	Ventura Community College
Alma Magaña	Family Child Care Provider
Dr. Carola Matera	CSUCI – Early Childhood Studies
Tanya McMahan.	Child Development Resources, Inc. – R & R
Johanna Pimentel	Moorpark College Child Development Center
Petra Puls.	First 5 Ventura County
Dr. Elizabeth Quintero.	CSUCI – Early Childhood Studies
Alicia Ramirez	Child Development Resources – Head Start
Lisa Sadowsky	VCOE CalSAFE
Pegi Steinberg	Ventura County Child Care Association
Adria Taha-Resnick.	CA Association for the Education of Young Children
Dr. Susan Walsh	CA Preschool Instruction Network
Pat Wilka	Professional Association for Childhood Education
Patty Zoll	County of Ventura Human Resources



Dr. Carola Matera and Adria Taha-Resnick, Co-Chairs

VCOE Staff Coordination: Carrie Murphy, Director; David Lindee, Project Specialist

Local Planning Council



of Ventura County

The United Voice for Early Care and Education

www.venturalpc.org